

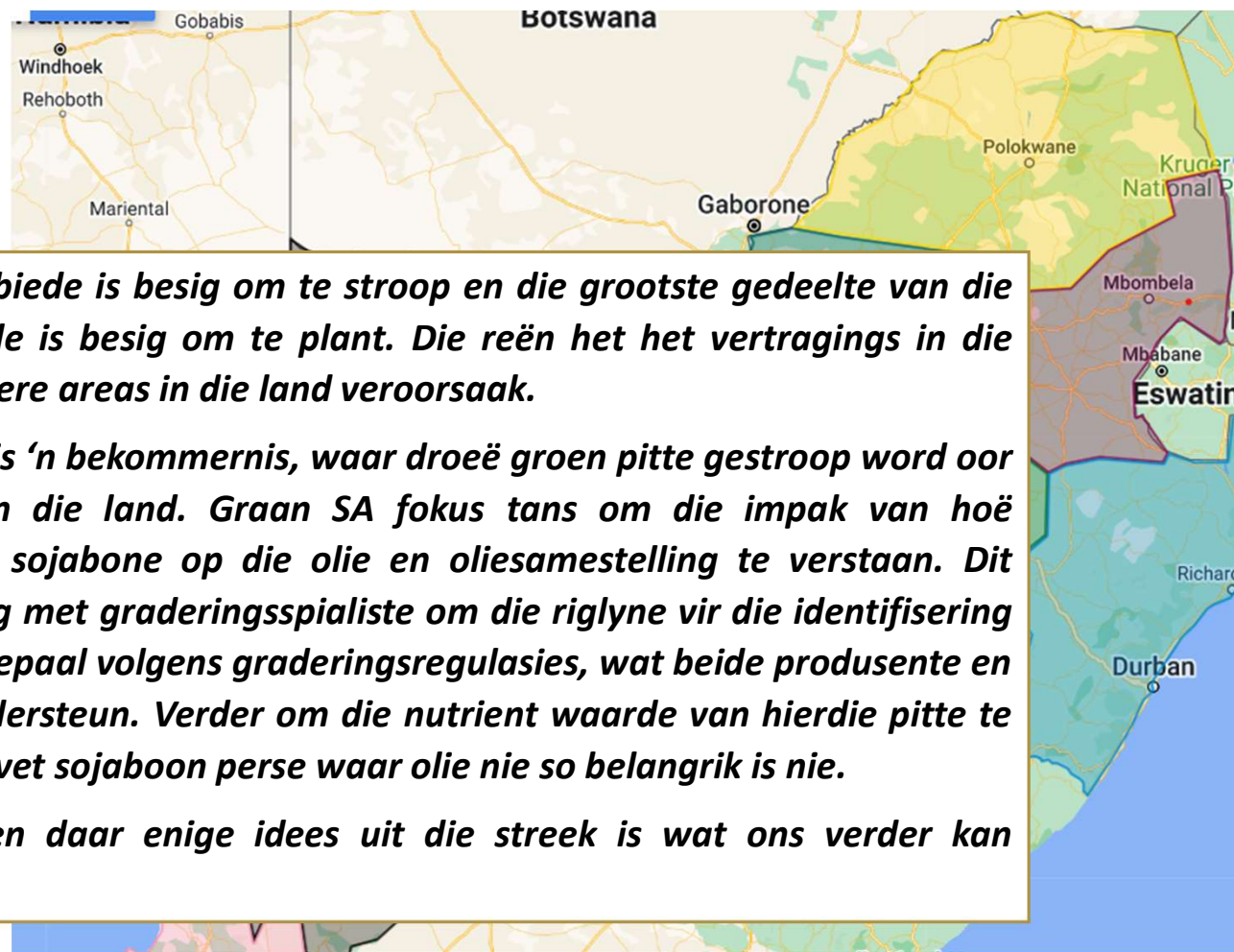


Algehele oorsig

Lanbouproduksietoestande

Landbouproduksie toestande

24 April 2024



Die somergraan gebiede is besig om te stroop en die grootste gedeelte van die wintergraan gebiede is besig om te plant. Die reën het het vertragings in die stroop proses in sekere areas in die land veroorsaak.

Sojaboon kwaliteit is 'n bekommernis, waar droeë groen pitte gestroop word oor verskeie gebiede in die land. Graan SA fokus tans om die impak van hoë persentasies groen sojabone op die olie en oliesamestelling te verstaan. Dit behels samewerking met graderingspialiste om die riglyne vir die identifisering van groenbone te bepaal volgens graderingsregulasies, wat beide produsente en gradeerders sal ondersteun. Verder om die nutrient waarde van hierdie pitte te bepaal, veral by volvet sojaboon perse waar olie nie so belangrik is nie.

Laatweet asb indien daar enige idees uit die streek is wat ons verder kan ondersoek.

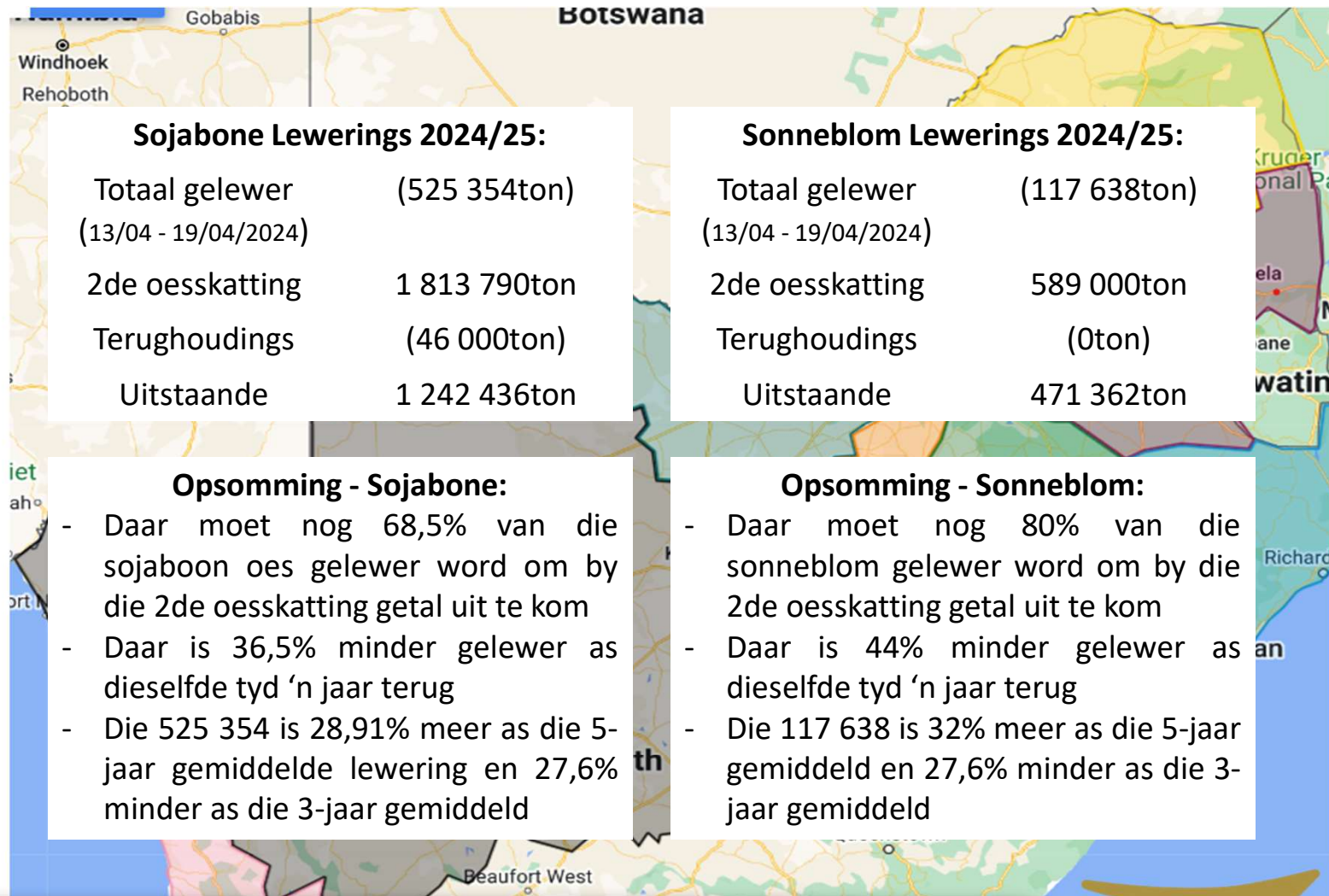


Lewerings

Somergrane

Somergraan Lewerings

24 April 2024



Bron: SAGIS, Graan SA

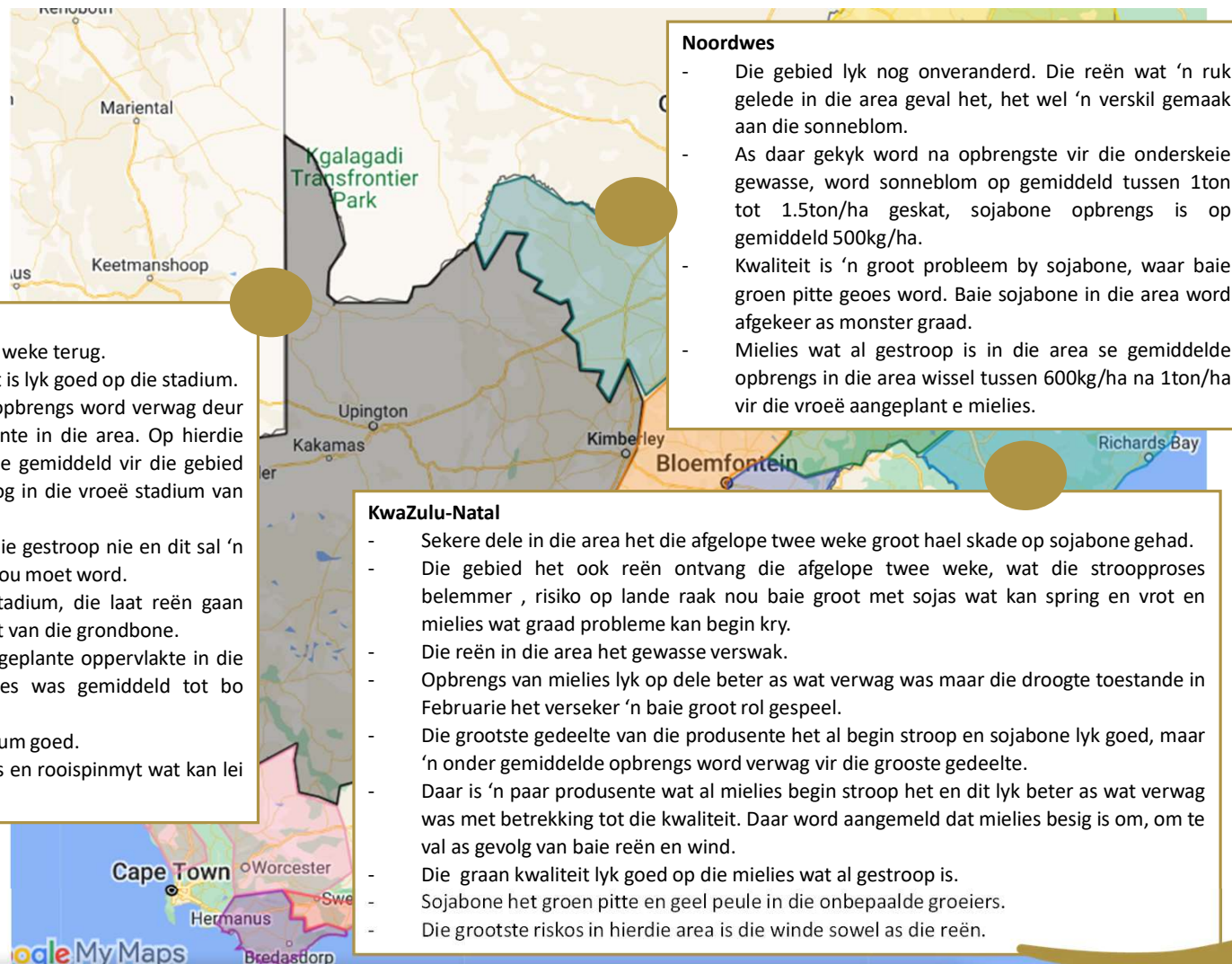


Sommerreëvalgebiede

Lanbouproduksietoestande

Landbouproduksie toestande

24 April 2024



Landbouproduksie toestande

24 April 2024

Noordwes-Sentraal Vrystaat

- Toestande het nie veel verander die laaste twee weke nie. Veral na die reën het die agteruitgang van die gewasse gestop en die verwagting is dat daar 'n verbetering vir veral pitgewig sal wees.
- Opbrengs verwagting vir mielies is vir 'n gemiddelde oes. Die verwagting is om gelyk te wees aan die langtermyn gemiddeld vir die area.
- Sonneblom lyk of dit effens onder gemiddeld gaan wees in vergelyking met die langtermyn gemiddeld.
- Sojabone se opbrengs blyk op gemiddeld laer te wees as die langtermyn gemiddeld. Die sojabone in die area lewer baie groen pitte.
- Mielies, sonneblom en sojabone is al besig om gestroop te word. Dit is nog aan die begin stadium van die oes proses.
- Die kwaliteit van mielies en sonneblom is baie goed op hierdie stadium. By sojabone is klein en groen pitte 'n groot uitdaging. Silos in die area ontvang dit as 'n spesiale klas en sal dit probeer opgradeer

Limpopo

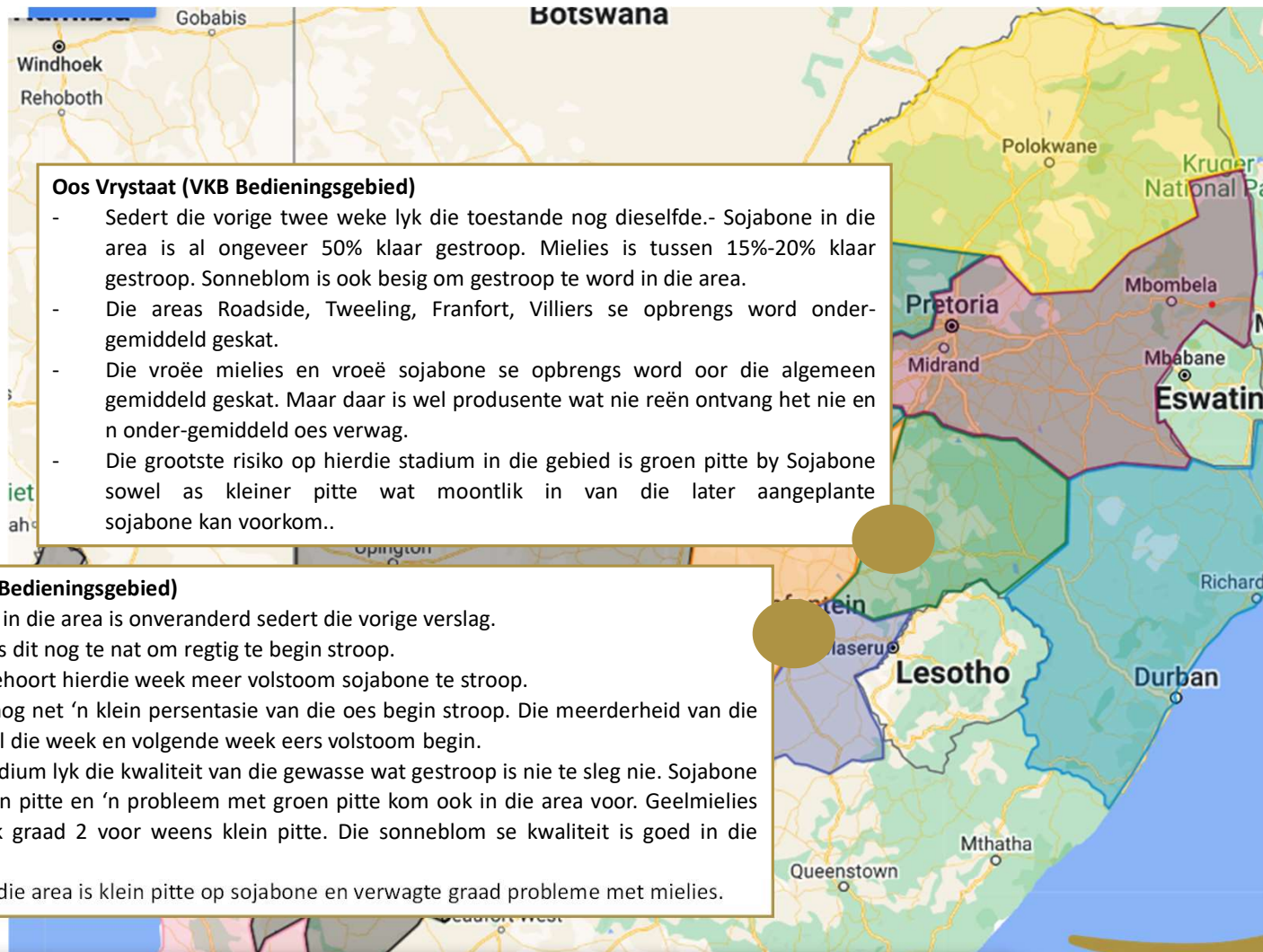
- Die toestande lyk beter in die gebied as twee weke terug.
- Die opbrengste in die area lyk op die stadium goed. Vir graansorghum word 20% meer verwag in sekere dele en in ander dele 20% minder. Dit is baie afhanklik van waar die sporadiese reën geval het.
- Die kwealas het baie skade aan die sorghum in die areas aangebring die afgelope twee weke.
- Sonneblom lyk op hierdie stadium baie goed, die reën wat die afgelope twee weke geval het kon 'n verskil maak. 5% van die sonneblom in die area is al gestroop. Die hoë olieinhoud-sonneblom wat gestroop word se opbrengs blyk bo gemiddeld te wees vir die area.
- Die kwaliteit van die meerderheid van die gewasse in die area lyk goed.
- Die risikos in die area kan voorkom by die laat aangeplante sonneblom wat nog in blom stadium is. Vroeë ryp kan nog 'n rol speel.
- Daar is ook areas in die gebied wat swaar trek waar die nodige reën nie geval het nie, maar dit is in die minderheid.

Mpumalanga/Oostelike Hoëveld

- Area oos van Middelburg na Carolina en Amersfoort se kant toe:
- Die area is al ver gevorder in die stroop proses en in sekere dele is vroeë aangeplante mielies al gestroop. Die opbrengste word gemiddeld tot bo gemiddeld vir die grootste hoeveelheid geskat.
- In die verre ooste was daar vertragsings aan die stroop proses a.g.v reën, maar 'n groot gedeelte kon die week begin stroop.
- Groen pitte by sojabone kom by van die produsente voor maar sal as die stroop proses verder is 'n beter prentjie van die skade kan skep.
- Area suid en suid-wes van Middelburg na Standerton en Pretoria se kant toe:
 - o Die toestande hier lyk nog dieselfde as twee weke terug.
 - o Die gemiddelde opbrengs vir die area is $\pm 50\%$ swakker as die langtermyn gemiddeld vir die gebied.
 - o Die sojabone in die areas is al ongeveer 80% klaar gestroop.
 - o Baie klein pitte op sojabone word in die area aangemeld. Sukkel met groen peule. Sommige van die produsente se eerste sojabone was ondergraad ± 5 tot 10 %.
 - o Ondergraad op gewasse a.g.v droogte kom wyd voor in die area en het gewasse se geneigdheid om klein pitte te maak vergroot.

Landbouproduksie toestande

24 April 2024



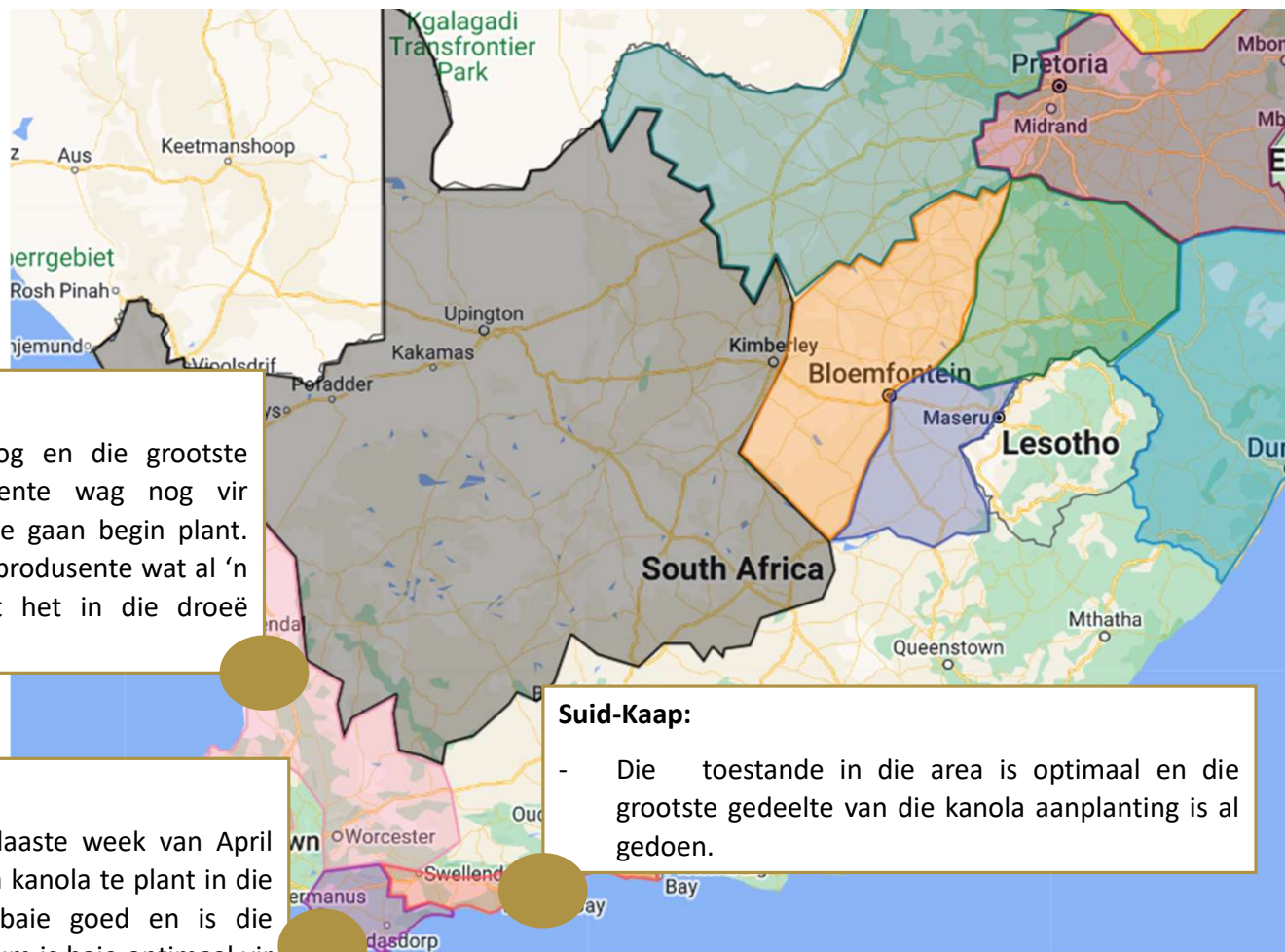


Winterreënvvalgebiede

Lanbouproduksietoestande

Lanbouproduskie toestande

24 April 2024



Swartland

- Die area is nog baie droog en die grootste gedeelte van die produsente wag nog vir genoegsame reën voor hulle gaan begin plant. Daar is hier en daar enkele produsente wat al 'n klein gedeelte begin plant het in die droeë grond.

Overberg:

- Die produsente is in die laaste week van April wat die optimale tyd is om kanola te plant in die area. Die grond vog is baie goed en is die toestande op hierdie stadium is baie optimaal vir die vestiging van grane.

Suid-Kaap:

- Die toestande in die area is optimaal en die grootste gedeelte van die kanola aanplanting is al gedoen.





Internasionale oorsig

Lanbouproduksietoestande

Weer Oorsig

24 April 2024

Plaaslike weer vooruitsigte:

Oor die volgende 48 uur sal die binnelandse streke na verwagting oorwegend droog bly, soos in die beelde hierbo getoon. Teen laat Donderdag sal 'n frontale stelsel egter na verwagting in sommige binnelandse gebiede innee, wat die waarskynlikheid van reën meebring. Dit is opmerklik dat verskeie weerbronne verskillende voorspellings kan bied, maar oor die algemeen word verwag dat die reënval in hierdie gebiede lig sal wees. As ons vorentoe kyk, behoort die eerste week van Mei hoofsaaklik droë toestande te sien, alhoewel daar 'n kans is dat 'n beduidende frontale stelsel suidelike gebiede rondom 6 Mei raak. Daar word geen sneeu in die komende week of wat verwag nie.

Internasionale weervoorsigte oor verskeie lande kan soos volg opgesom word:

Suid – Amerika:

- Sentraal-Brasilië ervaar baie droë toestande, terwyl Argentinië die teenoorgestelde probleem ondervind met oormatige reënval wat dit moeilik maak vir oesaktiwiteite.

Noord-Amerika:

- 'n Natter patroon begin vorm aanneem vir die Midde-Weste, met veelvuldige storms wat op die sentrale en suidelike vlaktes lê. Die noordelike vlaktes sal na verwagting ook meer aktiewe weer ervaar. Daar kan egter 'n paar onderbrekings in die aktiewe patroon vir die Delta-streek wees. Intussen worstel die Kanadese Prairies met droogtetoestande terwyl hulle die oesseisoen afskop.

Europa:

- Europa ervaar tans koel en nat weerstoestande, in teenstelling met beperkte buie in die droë Swartsee-koringstreek. In Australië is vroeë droogte tans nie 'n noemenswaardige kommer nie.

Bron: RMD Weather Report



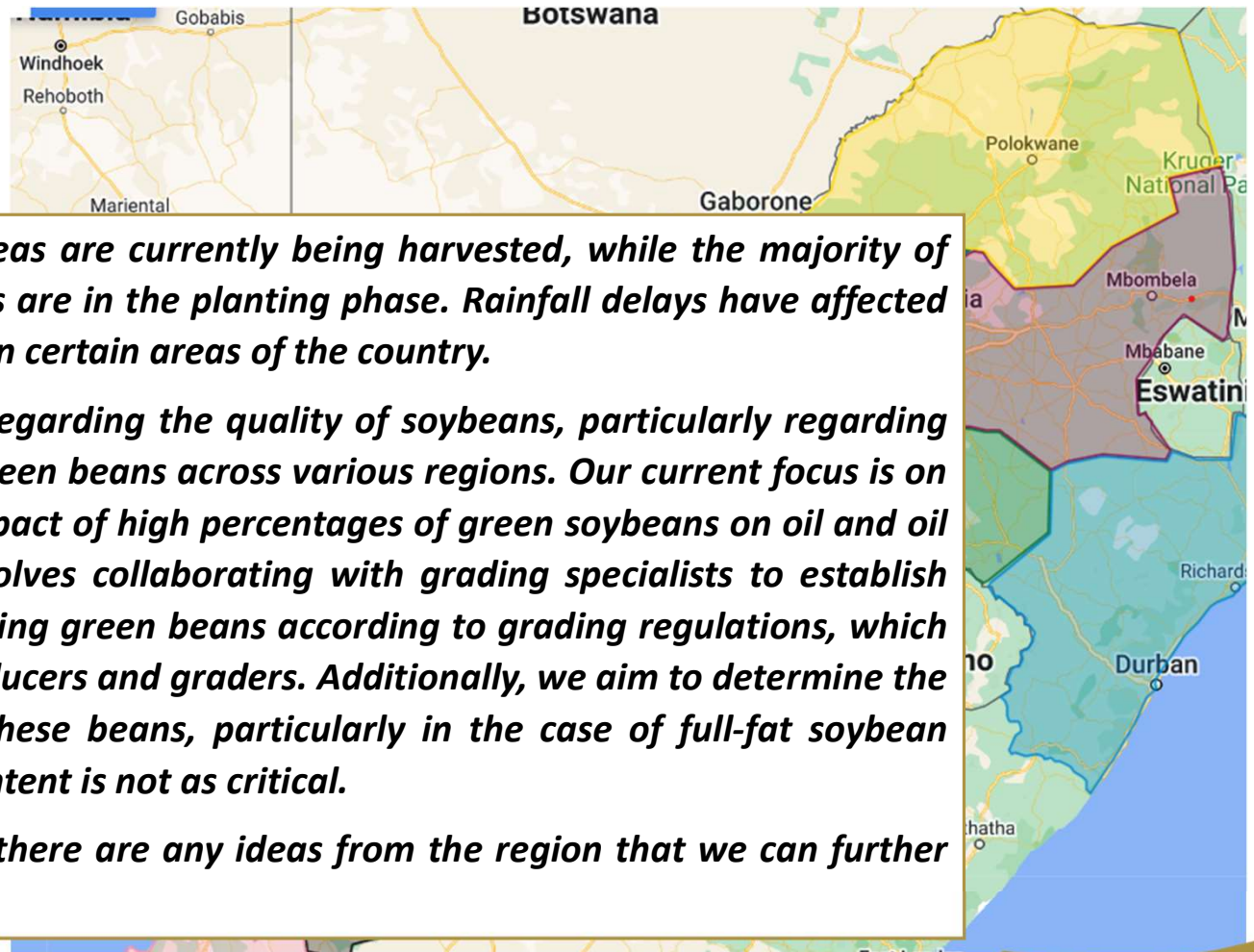


General overview

Agricultural Production Conditions

Agricultural Production Conditions

24 April 2024



The summer grain areas are currently being harvested, while the majority of the winter grain areas are in the planting phase. Rainfall delays have affected harvesting processes in certain areas of the country.

Concerns have risen regarding the quality of soybeans, particularly regarding the stripping of dry green beans across various regions. Our current focus is on understanding the impact of high percentages of green soybeans on oil and oil composition. This involves collaborating with grading specialists to establish guidelines for identifying green beans according to grading regulations, which will support both producers and graders. Additionally, we aim to determine the nutritional value of these beans, particularly in the case of full-fat soybean varieties where oil content is not as critical.

Please let us know if there are any ideas from the region that we can further investigate.

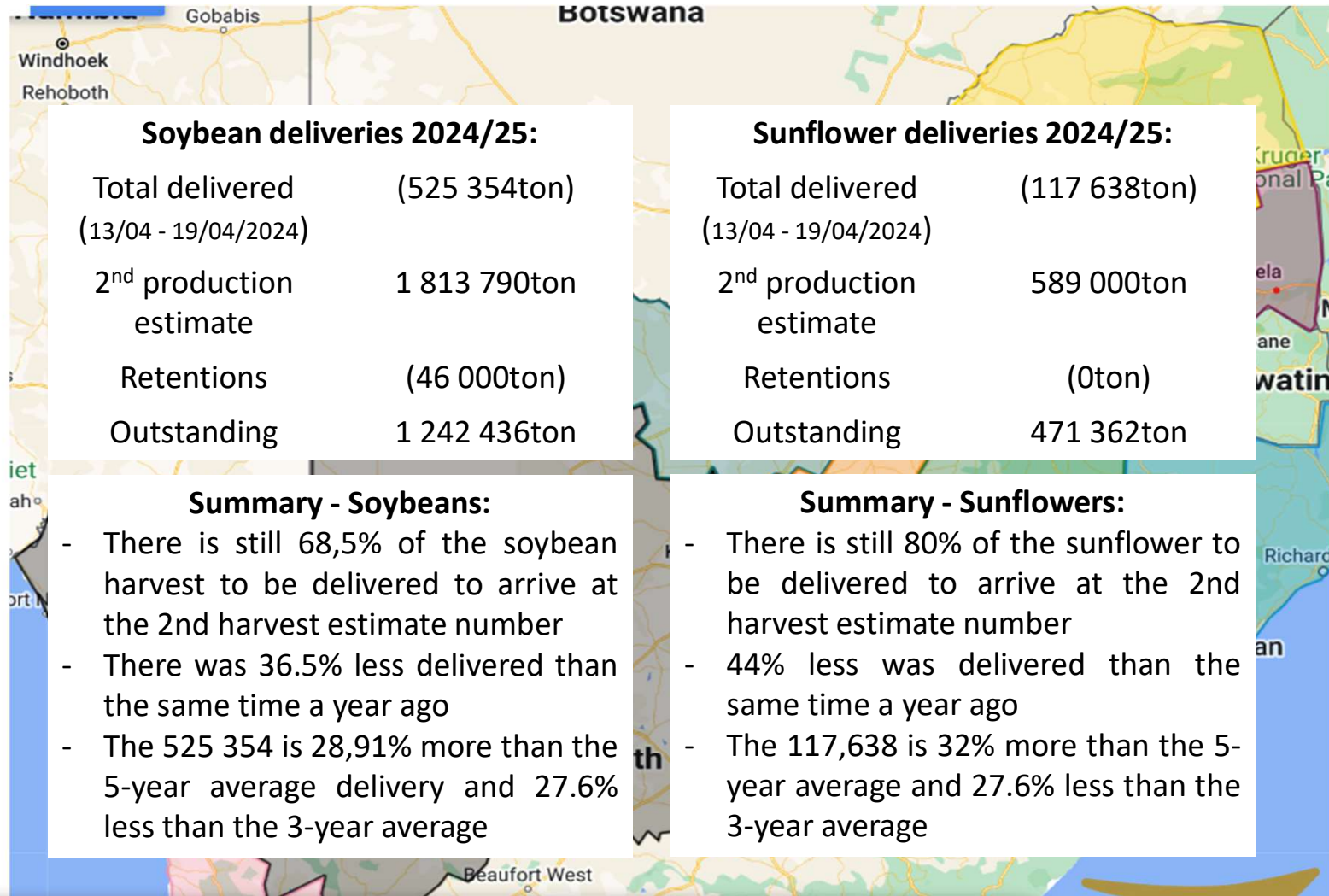


Deliveries

Summer grain

Summer grain Deliveries

24 April 2024



Bron: SAGIS, Graan SA





Summer rainfall regions

Agricultural Production Conditions

Agricultural Production Conditions

24 April 2024

Northern Cape

- The conditions look the same as two weeks ago.
- The crops planted in the area look good at the stage.
- an average to above average yield is expected by the largest majority of producers in the area. At this stage, approximately 10% above average for the area is expected. The estimate is based on the early stage of the harvest period.
- The late maize in the area has not yet been harvested and this will be a determining factor that must be monitored.
- The groundnuts look good at the stage, the late rain will possibly have an effect on the quality of the groundnuts.
- Early maize, which is 5% of the planted area in the area, has been harvested. The harvest was average to above average.
- Quality in the area looks good at the moment.
- Risks in the area are hail on maize and red spider mite which can lead to slight kernel weight losses.

North West

- The area still looks unchanged. The rain that fell in the area a while ago did make a difference to the sunflower.
- If you look at yields for the respective crops, sunflower is estimated at an average of between 1 ton to 1.5t/ha, soybean yield is at an average of 500kg/ha.
- Quality is a big problem with soybeans, where many green seeds are harvested. Many soybeans in the area are rejected as sample grade.
- Maize that has already been harvested in the area's average yield in the area varies between 600kg/ha to 1ton/ha for the early planted maize.
- The rain that fell in the area a while ago, did make a difference to the sunflower.
- If you look at yields for the respective crops, sunflower is estimated at an average of between 1 ton to 1.5 ton/ha, soybean yield is at an average of 500kg/ha.
- Quality is a big problem with soybeans, where many green kernels are harvested. Many soybeans in the area are rejected as sample grade.
- Maize that has already been harvested in the area's average yield in the area varies between 600kg/ha to 1t/ha for the early planted maize.

KwaZulu-Natal

- Certain parts of the area have had major hail damage to soybeans in the past two weeks.
- The area has also received rain in the last two weeks, which hinders the harvesting process, the risk to fields is now very high with soybeans that can spring and rot and corn that can start to have grade problems.
- The rain in the area weakened crops.
- Yield of maize looks in some parts better than expected, but the drought conditions in February certainly played a very big role.
- The largest part of the producers have already started harvesting and soybeans look good, but a below average yield is expected for the largest part.
- There are a few producers who have already started stripping maize and it looks better than expected in terms of quality. It is reported that corn is falling over due to a lot of rain and wind.
- The grain quality looks good on the corn that has already been stripped.
- Soybeans have green seeds and yellow pods in the indeterminate growers.
- The biggest risks in this area are the winds as well as the rain.

Agricultural Production Conditions

24 April 2024

Limpopo

- The conditions look better in the area than two weeks ago.
- The yields in the area look good at the moment. For grain sorghum, 20% more is expected in certain parts and 20% less in other parts. It is very dependent on where the sporadic rain fell.
- The pest has caused a lot of damage to the sorghum in the areas in the last two weeks.
- Sunflower looks very good at this stage, the rain that fell in the last two weeks could make a difference. 5% of the sunflower in the area has already been stripped. The yield of the high oil content sunflower that is stripped appears to be above average for the area.
- The quality of the majority of crops in the area looks good.
- The risks in the area can occur with the late planted sunflower which is still in bloom. Early frost can still play a role.
- There are also areas in the area that suffer heavily where the necessary rain has not fallen, but this is in the minority.

North West Central Free State

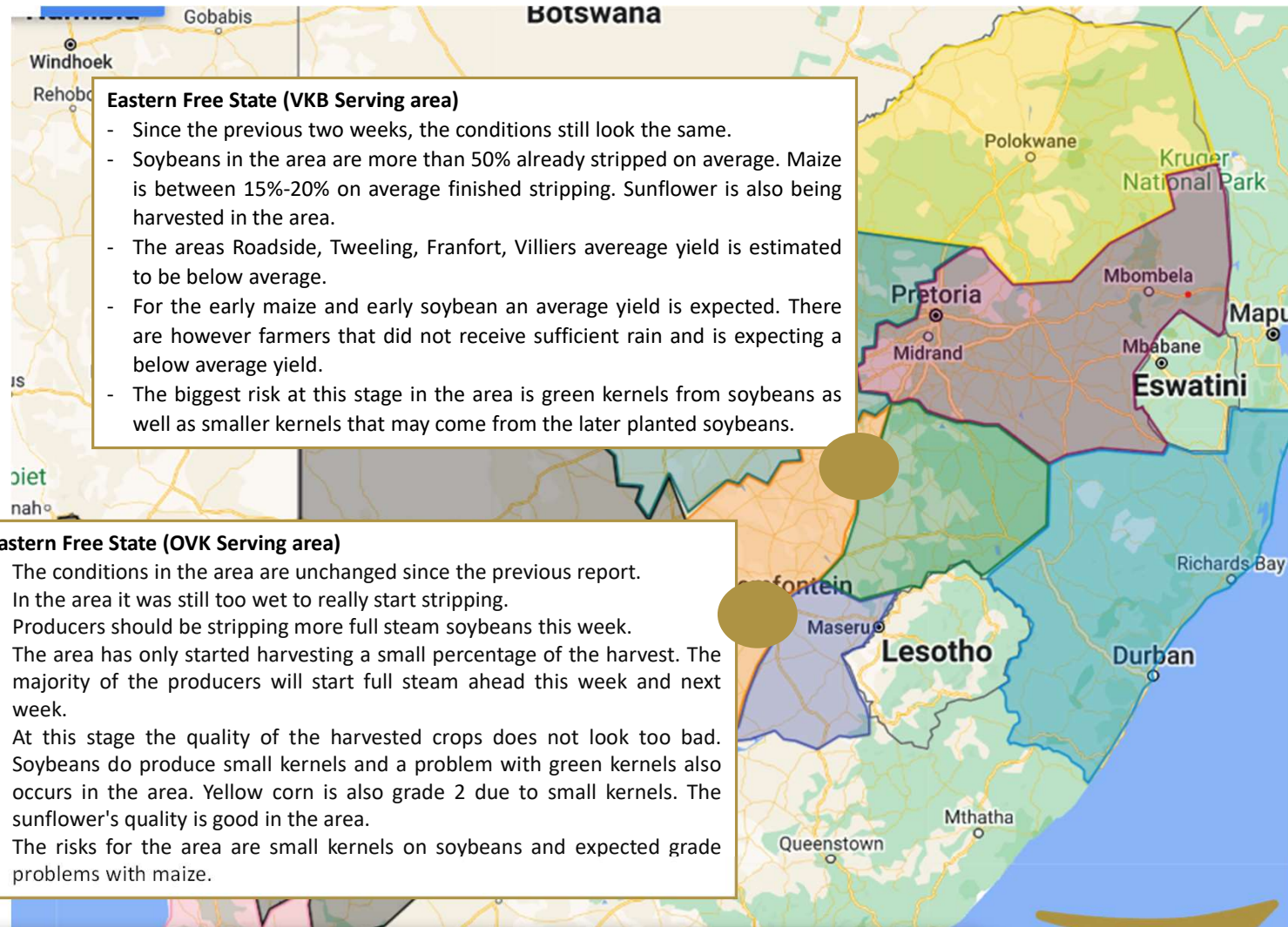
- Conditions have not changed much in the last two weeks. Especially after the rains, the deterioration of the crops stopped, and the expectation is that there will be an improvement for kernel weight in particular.
- Yield expectation for maize is for an average harvest. The expectation is to be equal to the long-term average for the area.
- Sunflower looks like it will be slightly below average compared to the long-term average.
- Soybean yield appears to be lower on average than the long-term average. The soybeans in the area produce many green kernels.
- Maize, sunflower and soybeans are already being harvested. It is still at the beginning stage of the harvesting process.
- The quality of maize and sunflower is very good at this stage.
- With soybeans, small and green seeds are a big challenge. Silos in the area receive it as a special class and will try to upgrade it.

Mpumalanga/Eastern Highveld

- Area east of Middelburg towards Carolina and Amersfoort:
 - The area is already well advanced in the stripping process and in certain parts early planted maize has already been stripped. The returns are estimated to be average to above average for the largest quantity.
 - In the far east there were delays in the stripping process due to rain, but a large part was able to start stripping this week.
 - Green kernels in soybeans are present with some of the producers but will be able to create a better picture of the damage if the stripping process is further.
- Area south and south-west from Middelburg towards Standerton and Pretoria:
 - o The conditions here still look the same as two weeks ago.
 - o The average return for the area is $\pm 50\%$ weaker than the long-term average for the area.
 - o The soybeans in the areas have already been stripped to about 80%.
 - o Very small kernels on soybeans are reported in the area. Struggling with green pods. Some of the producers' first soybeans were subgrade ± 5 to 10 %.
 - o Lower grade on crops due to drought is widespread in the area and has increased crops' propensity to produce small seeds.

Agricultural Production Conditions

24 April 2024



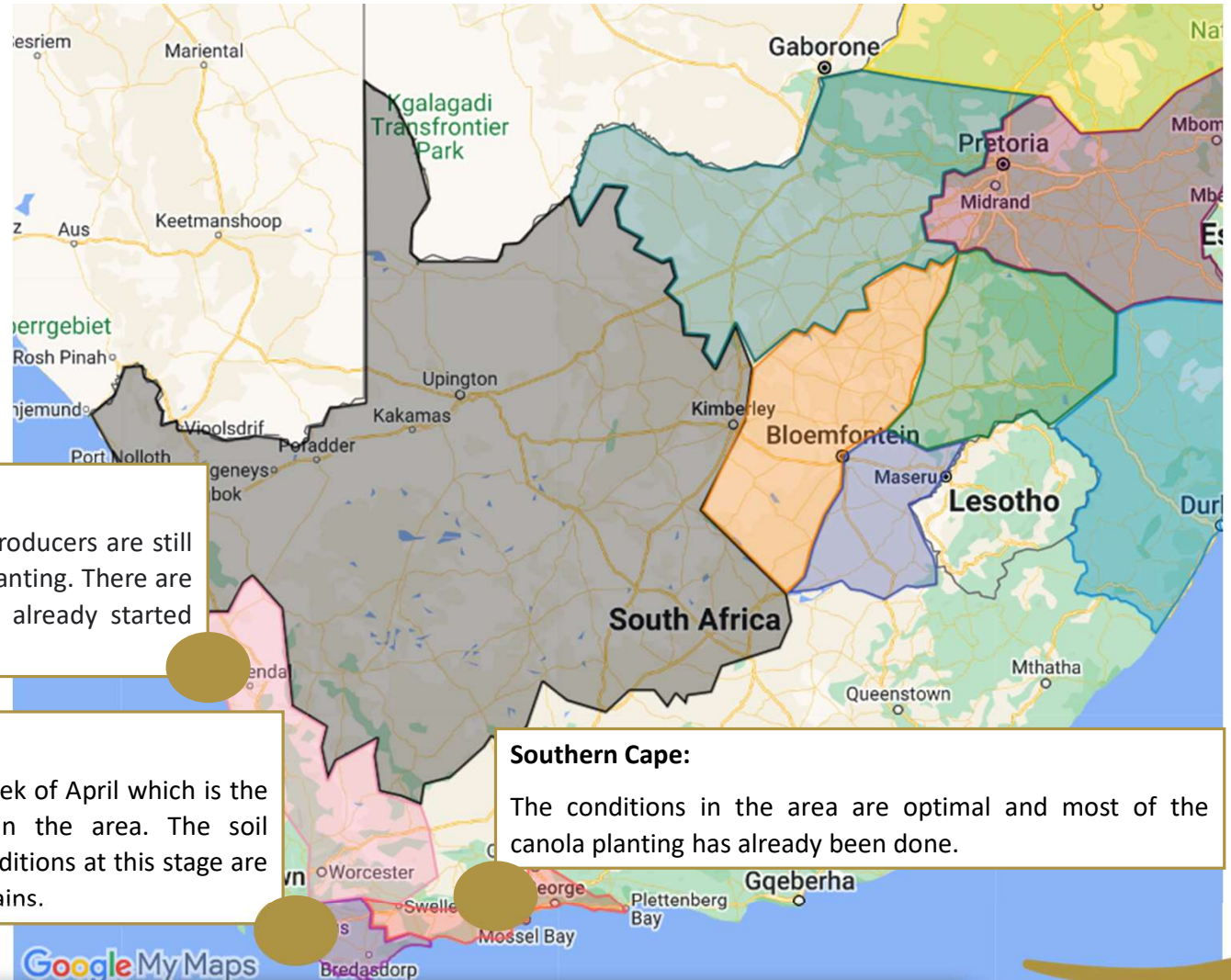


Winter rainfall regions

Agricultural Production Conditions

Agricultural Production Conditions

24 April 2024



Swartland

- The area is still very dry and most of the producers are still waiting for sufficient rain before they start planting. There are a few producers here and there who have already started planting a small portion in the dry land.

Overberg:

- The producers are in the last week of April which is the optimal time to plant canola in the area. The soil moisture is very good and the conditions at this stage are very optimal for the planting of grains.

Southern Cape:

The conditions in the area are optimal and most of the canola planting has already been done.





International overview

Agricultural Production Conditions

Agricultural Production Conditions

24 April 2024

Local weather forecasts:

Over the next 48 hours, the interior regions are expected to remain predominantly dry, as shown in the images above. However, by late Thursday, a frontal system is anticipated to sweep into some interior areas, bringing with it the likelihood of rain. It's worth noting that various weather sources may present differing forecasts, but generally, the rainfall in these areas is expected to be light. Looking ahead, the first week of May should see mainly dry conditions, although there's a chance of a significant frontal system affecting southern areas around May 6th. There's no snow expected in the coming week or so.

The weather outlook across various countries can be summarised as follows:

South America:

- Central Brazil is experiencing very dry conditions, while Argentina is facing the opposite problem with excessive rainfall making it difficult for harvest activities.

North America:

- A wetter pattern is beginning to take shape for the Midwest, with multiple storms lining up for the central and southern Plains. The northern Plains are also expected to experience more active weather. However, there may be some breaks in the active pattern for the Delta region. Meanwhile, the Canadian Prairies are grappling with drought conditions as they kick off the crop season.

Europe:

- Europe is currently experiencing cool and wet weather conditions, contrasting with limited showers in the dry Black Sea wheat region. In Australia, early dryness is not posing a significant concern at the moment.

Source: RMD Weather Report

